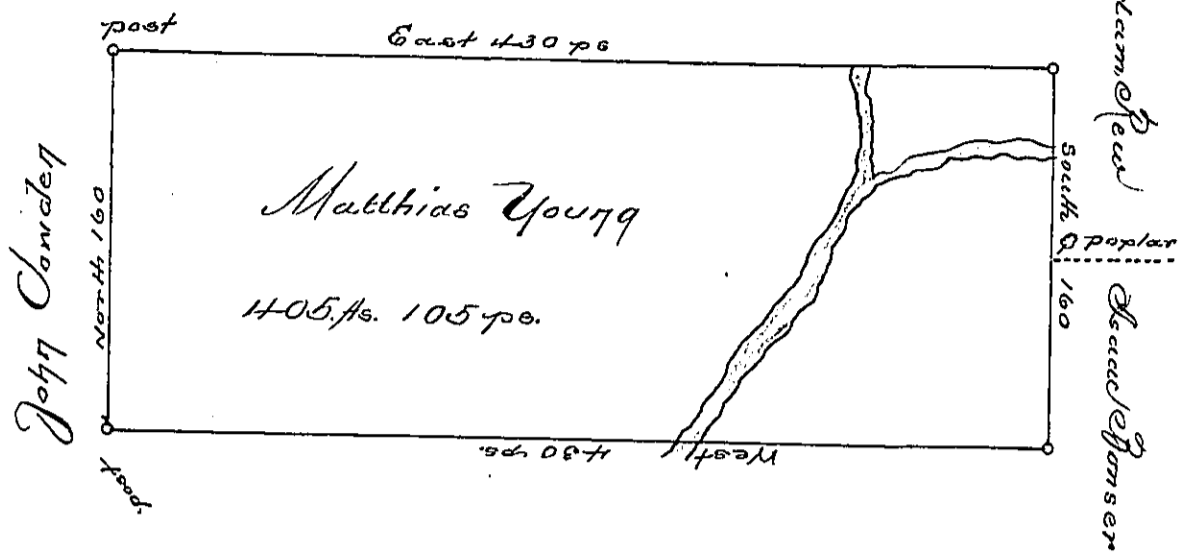


Jeremiah Mosher



Situate on Blacklick Creek in Wheatfield Township Westmoreland
 County, Containing 1405 Acres & 105 ps. & Allowance of six ps. Cent
 for Roads &c. Survey'd for Matthias Young the 19th day of Novem-
 ber 1794 on Warrant dated the 3^d day of May, 1793.

Daniel Brodhead Esq.
 S.G.

James Ross D.C.

IN TESTIMONY that the above is a copy of the original remaining on file in the
 Department of Internal Affairs of Pennsylvania, made con-
 formably to an Act of Assembly approved the 16th day of
 February, 1833, I have hereunto set my Hand and caused
 the Seal of said Department to be affixed at Harrisburg, this

fifteenth day of April 1895,

Lea R. Brown

Secretary of Internal Affairs.